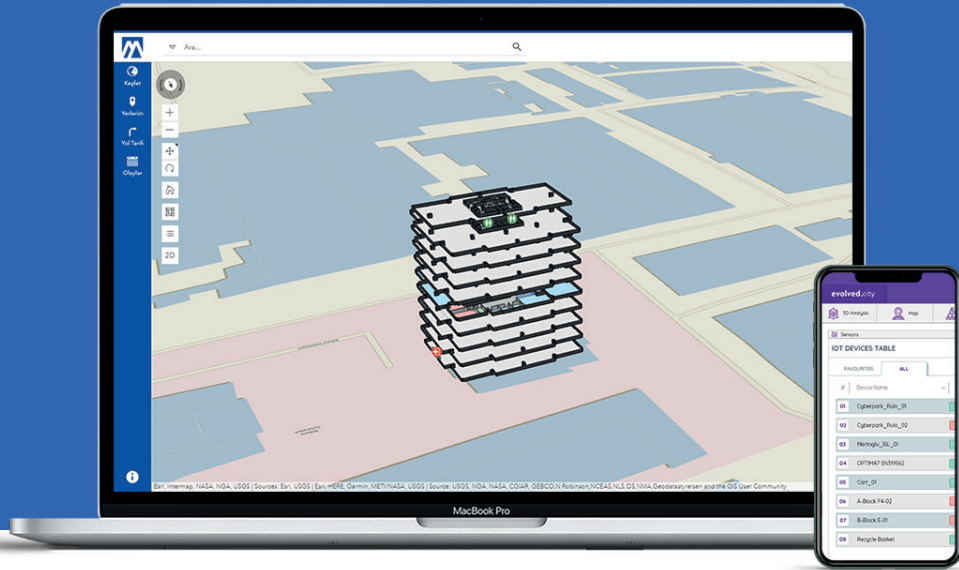


SMART BUILDING MANAGEMENT BY EVOLVED.CITY | IN COOPERATION WITH ESRI



***Design your workflows,
add sensors and manage
directly from the floor plan!***



Geographic Information Systems (GIS) pave the way for smarter maps and provide an indispensable capacity for modern cities in fields such as: transportation, urban planning and infrastructure. However, considering that 80% of our time is spent indoors, the next (natural) step is to carry the analysis, control and planning methods of GIS into buildings.

As a Platinum Partner we can bundle Evolved.City with Esri's geospatial ecosystem to create a highly effective solution for smart facility management (Please see overleaf for the advantages Esri's ArcGIS Indoors and IoT technologies provide). This bundle supports both locations without existing facility management systems, as well as integrating with IBM, Cisco and similar FM solutions to further enhance their capacity.





Efficient use of space



Indoors reports and improved data analyses

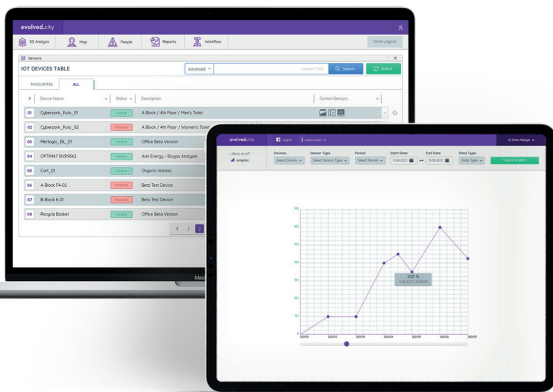


Real-time sensor data visualizations



Workflow definitions and automatic task assignment

Evolved.City and Esri ArcGIS Indoors work together to provide a common operating space for your facilities while providing the following capabilities:



Evolved.City:

- Asset management using sensors
- Remote monitoring of indoor conditions
- Workflow definitions and automated task assignment
- Reporting and analysis

ArcGIS Indoors:

- Indoor positioning and routing
- Efficient use of space
- Expert system integration (IBM, Cisco etc.)
- Dashboard screens and floor plan site status summary
- Advanced data analysis with artificial intelligence

